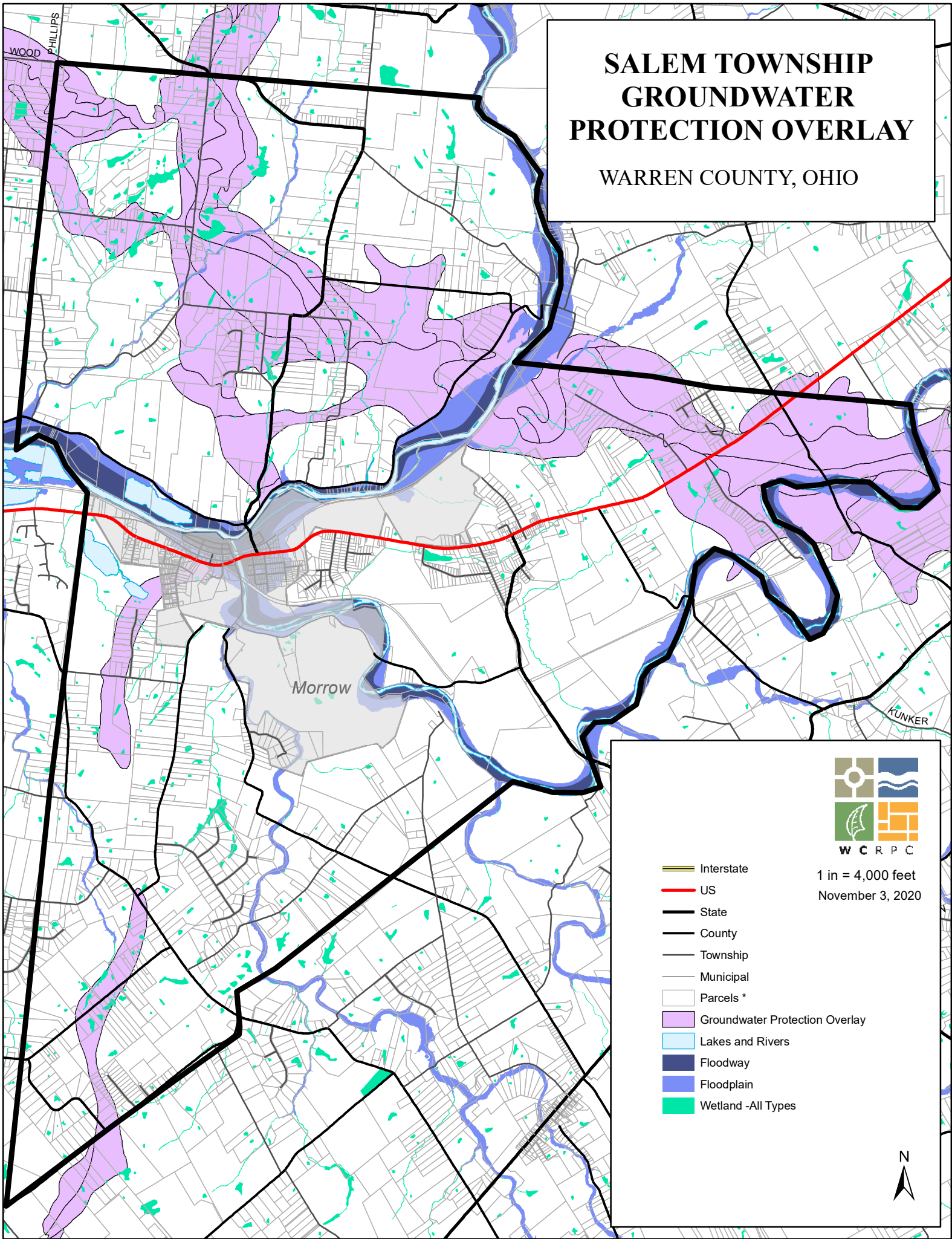


# SALEM TOWNSHIP GROUNDWATER PROTECTION OVERLAY

WARREN COUNTY, OHIO



1 in = 4,000 feet  
November 3, 2020

- Interstate
- US
- State
- County
- Township
- Municipal
- Parcels \*
- Groundwater Protection Overlay
- Lakes and Rivers
- Floodway
- Floodplain
- Wetland -All Types

