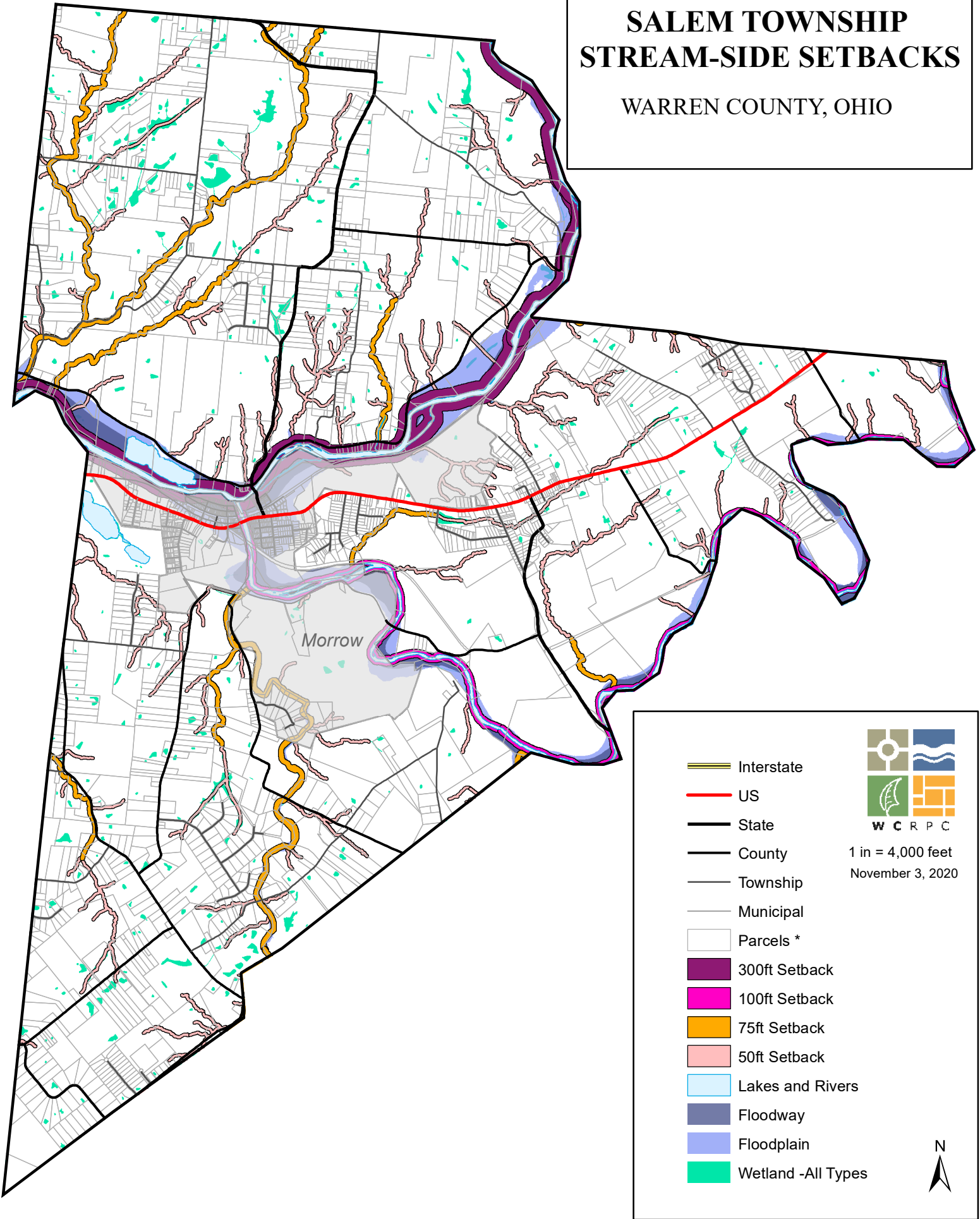


SALEM TOWNSHIP STREAM-SIDE SETBACKS

WARREN COUNTY, OHIO



Interstate

US

State

County

Township

Municipal

Parcels *

300ft Setback

100ft Setback

75ft Setback

50ft Setback

Lakes and Rivers

Floodway

Floodplain

Wetland -All Types



1 in = 4,000 feet
November 3, 2020

